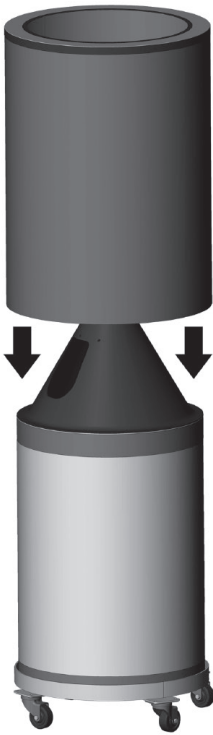
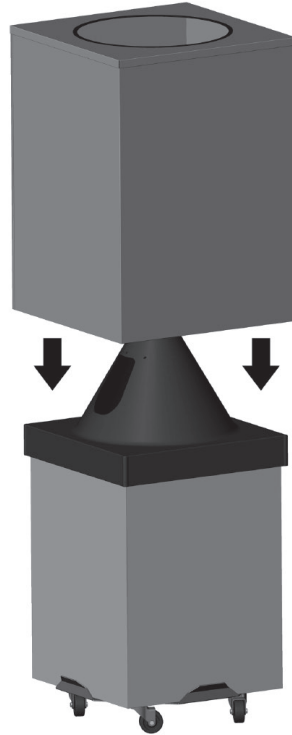


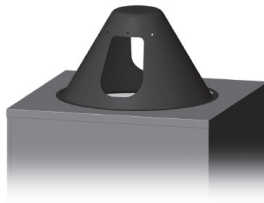
FIRE RESISTANT DRUM / BOX COVER INSTALLATION INSTRUCTIONS



Drum Cover



Box Cover



Cover installation
(top) on package
with hood

Slide cover over fiber drum or corrugated box packaging. Ensure the cover is all the way down with the top resting flat on the top of the packaging or hood. If the drum or box is on a dolly, the cover should go over the top of the dolly. Do not tuck bottom of cover into top of dolly, doing so may allow sparks to come in contact with the bottom of the package.

Not intended to cover square mini-pallets on which some drums are delivered. In order to meet necessary FR safety standards, either remove drum from pallet or use a metal dolly.

Cover material meets or exceeds NFPA 701 standards